

the Reclaiming Futures model

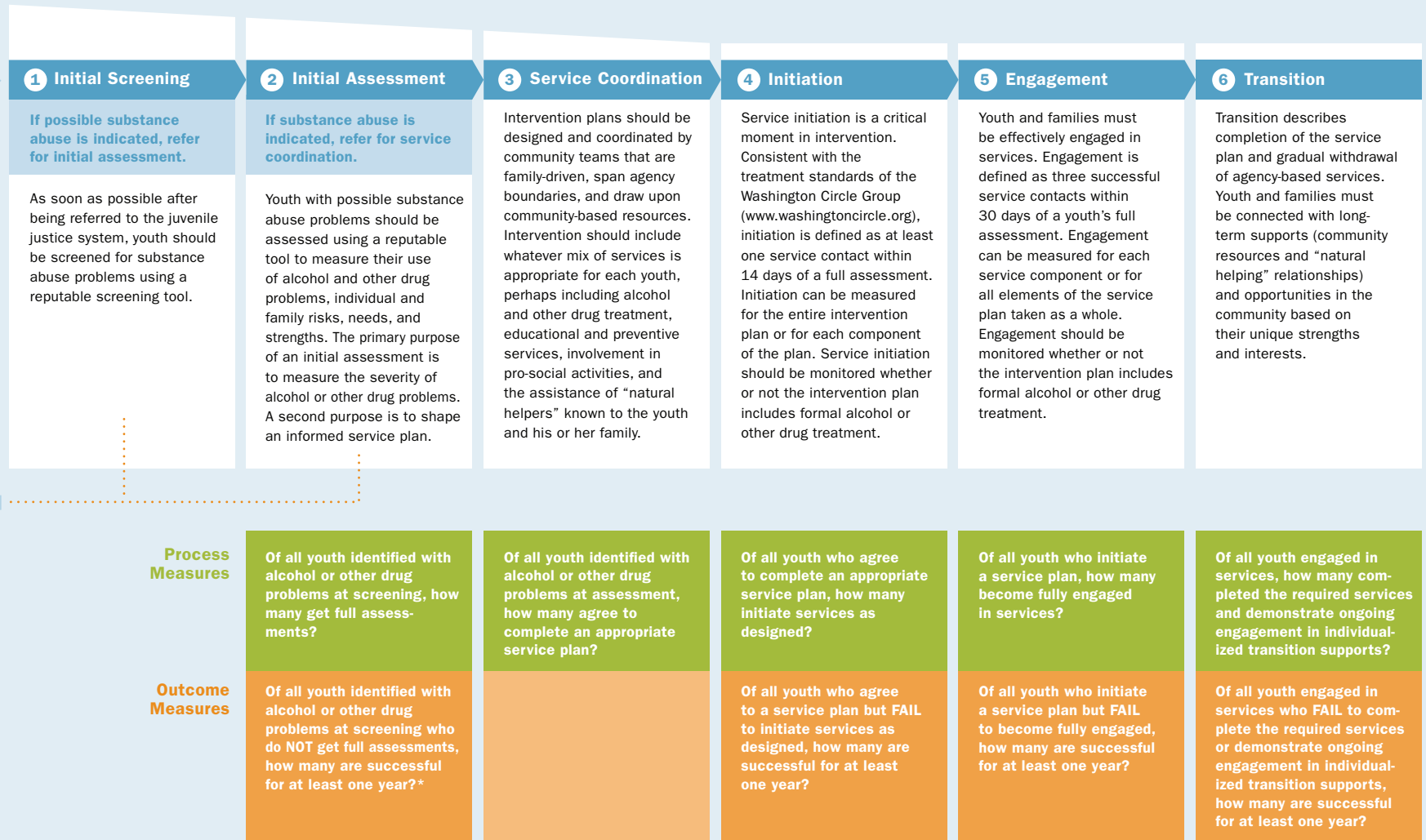
COORDINATED INDIVIDUALIZED RESPONSE

COMMUNITY DIRECTED ENGAGEMENT

Youth referred to the juvenile justice system for law violations

Youth eligible for treatment or supervision in the community

If no substance abuse is indicated, resume traditional juvenile justice process



* Success may be defined in various ways, including the absence of new arrests or new court referrals, no new drug use, reduced drug use, no subsequent referrals for drug or alcohol treatment, or some combination of these measures.

Of all youth who complete the required services and demonstrate ongoing engagement in individualized transition supports, how many are successful for at least one year?