

Improving School & Community Safety: An Multi-Integrated Systems Approach

Best Practices in Addressing Selected
Offenses on Campus

CHAPTER ONE: Understanding Zero Tolerance

Definition, Background, & Effect

DEFINITION

“A philosophy or policy that mandates the application of pre-determined consequences, most often severe and punitive in nature, that are intended to be applied regardless of the seriousness of behavior, mitigating circumstances, or situational context.”

Skiba et al. 2006

HISTORICAL DEVELOPMENT

- 80's War on Drugs
- Later applied to combat pollution, trespassing, sexual trespassing, & sexual harrassment
- Attributed to "Broken Windows" theory of crime (Kelling, George & Coles, 1997)
- School Systems begin adopting in early 90's
- Suspensions nearly doubled from 1.7 million in 74 to 3.1 million in 01.
- Assumes that removal of disruptive students deters others from similar conduct while enhancing classroom

Zero Tolerance=Zero Intelligence

Adolescent Brain Research, School as
a Protective Buffer, & Racial & Ethnic
Disparity

SCHOOL CONNECTEDNESS

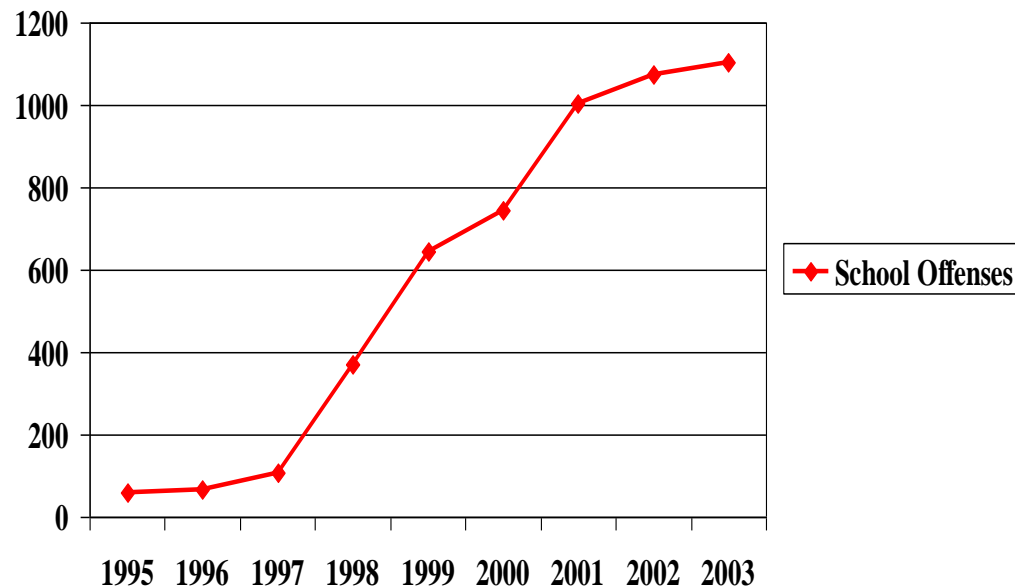
- School connectedness is a strong protective factor against delinquency. US Surgeon General. (2001). *Youth Violence: A Report of the Surgeon General*.
- School connectedness is linked to lower levels of substance abuse, violence, suicide attempts, pregnancy, & emotional distress. *Journal of School Health 72 (4)*.
- OSS of elementary & middle school students contributes to drop-out rates. Predictors of Suspension & Negative School Outcomes: A Longitudinal Investigation (2003)

EFFECTS OF ZERO TOLERANCE

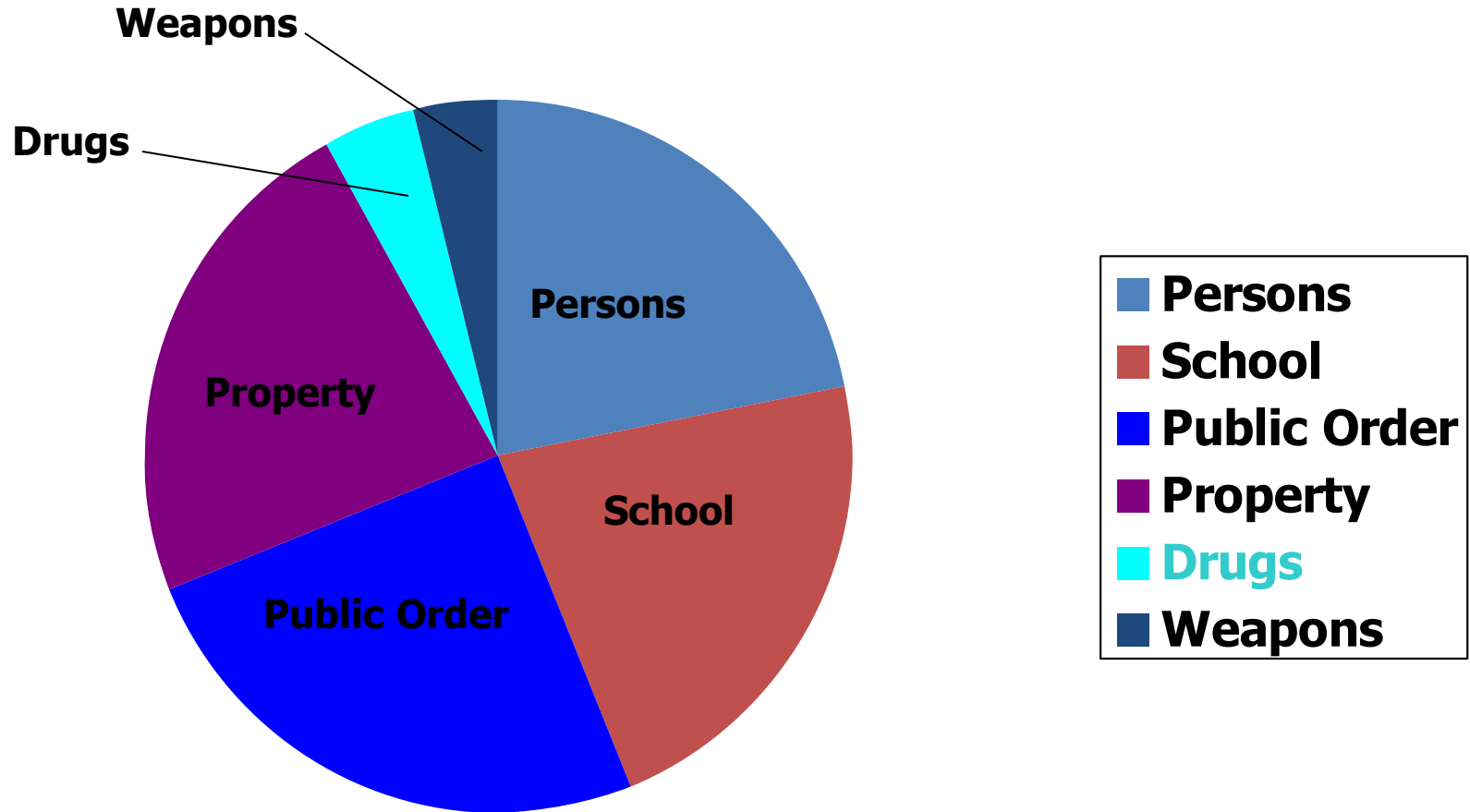
- Suspension rates have doubled
- School Code violations result in court referrals
- Increase in police on school campus
- Increase in suspensions and referrals has significantly increased racial & ethnic disparities
- Drop-out rates increase
- Juvenile crime increases

IMPACT OF CAMPUS POLICE

- School Discipline Becomes Criminal Matter
- Youth are Stigmatized with Juvenile Records
- Zero Tolerance/Zero Evidence
- Courts Overburdened



COURT REFERRALS: PRE-PROTOCOL



CHAPTER TWO: SYSTEMS THEORY

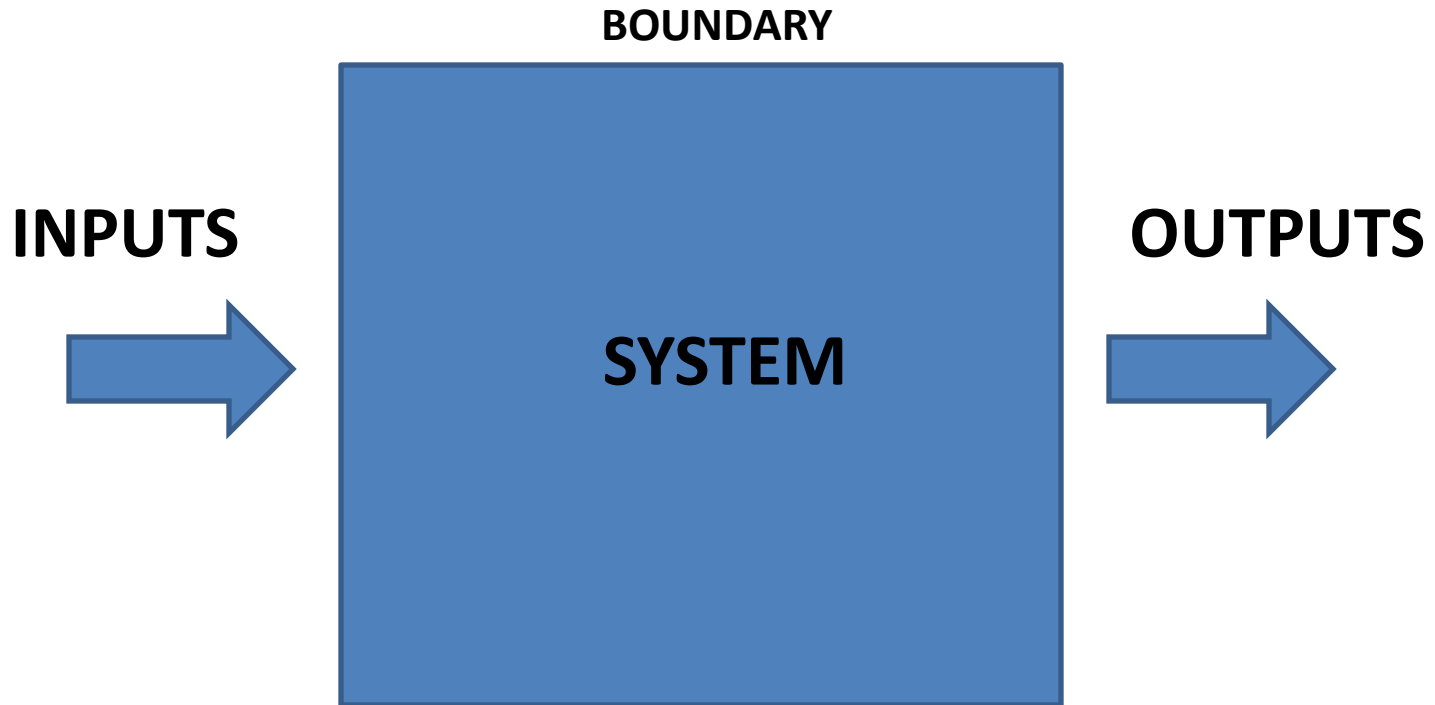
A Roadmap to Recovery, or It's the
Process; Not the Product

SYSTEM DEFINED

a set of interacting components,
acting interdependently and
sharing a common boundary
separating the set of components
from its environment.

Bozeman, B. *Public Management and policy Analysis*, St. Martin Press, Inc. New York (1979), 309.

SYSTEMS THEORY



LINEAR PROGRAMMING MODEL

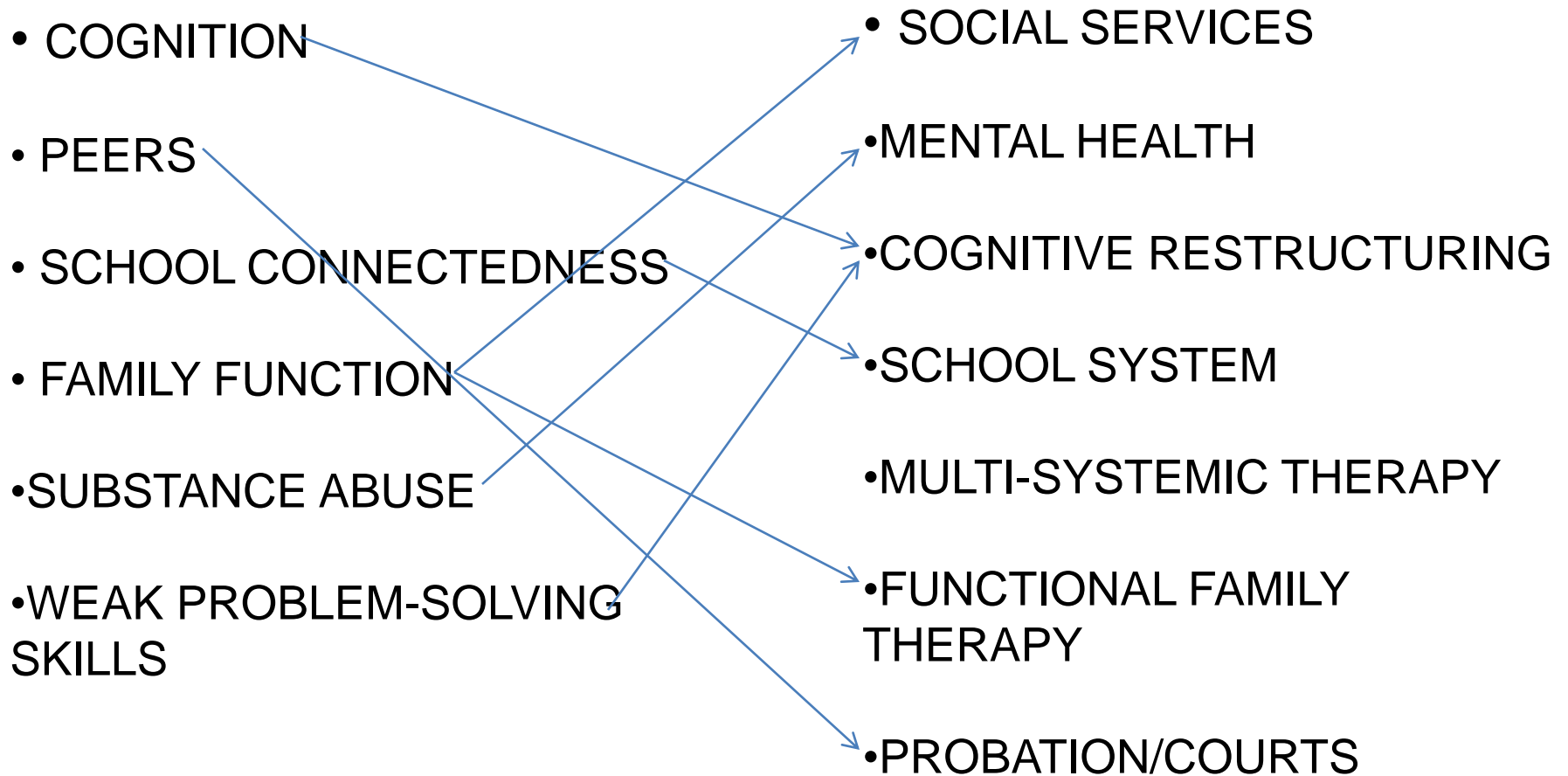
those values of X , the variables that maximize the linear objective Z while simultaneously satisfying the imposed linear constraints and the non-negativity constraints.

Bozeman, B. *Public Management and policy Analysis*, St. Martin Press, Inc. New York (1979), 309.

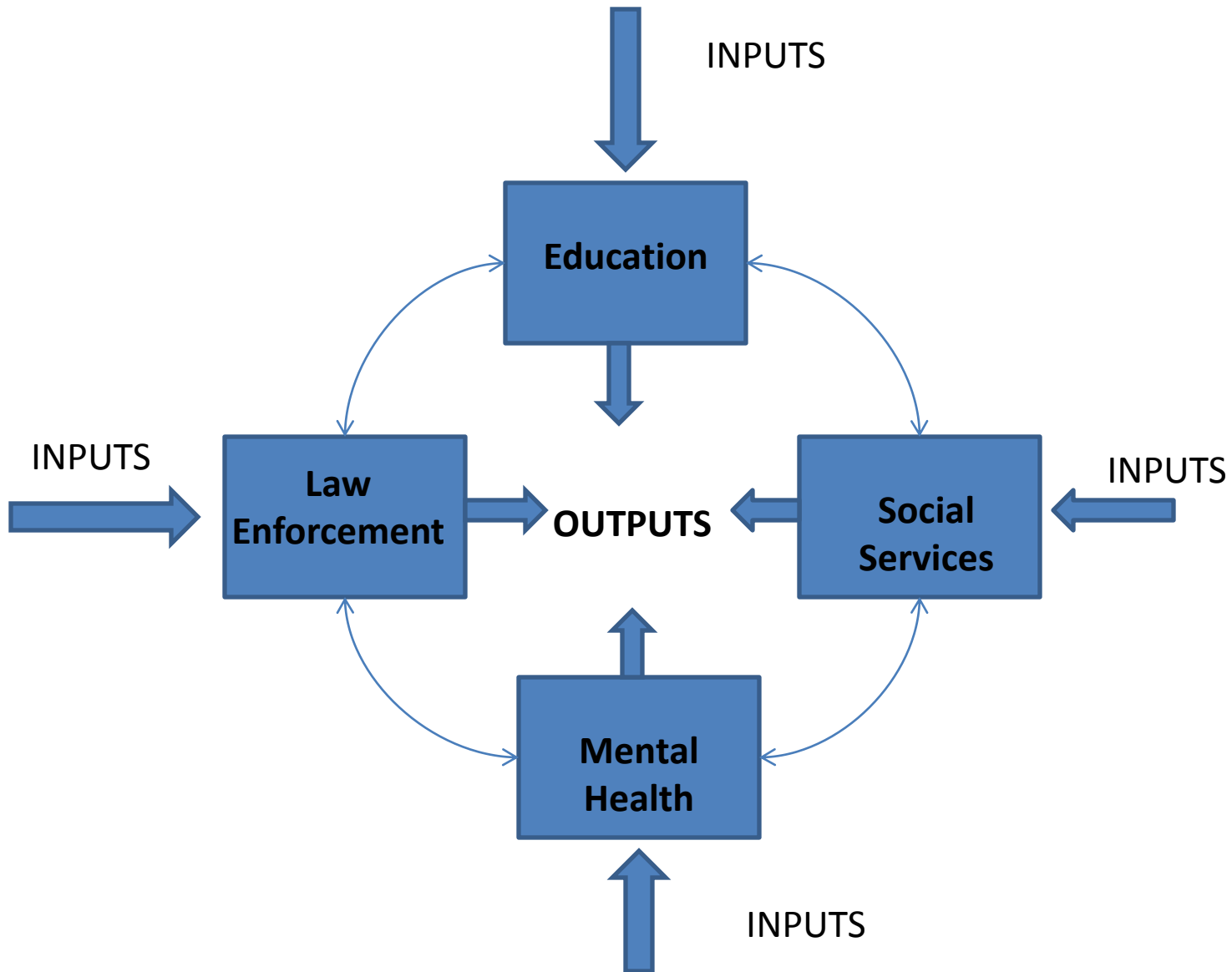
WHAT IS THE A JUVENILE JUSTICE SYSTEM?

- WHAT IF THE DESIRED OUTCOME IS DEPENDENT ON MULTIPLE SYSTEMS?
- HOW ARE THOSE MULTIPLE SYSTEMS INTEGRATED TO MAXIMIZE THE DESIRED OUTCOME?

IT TAKES A COMMUNITY TO TARGET CRIMINOGENIC NEEDS



MULTI-INTEGRATED SYSTEM THEORY



CHAPTER THREE: The Protocol

The Clayton County Case Study

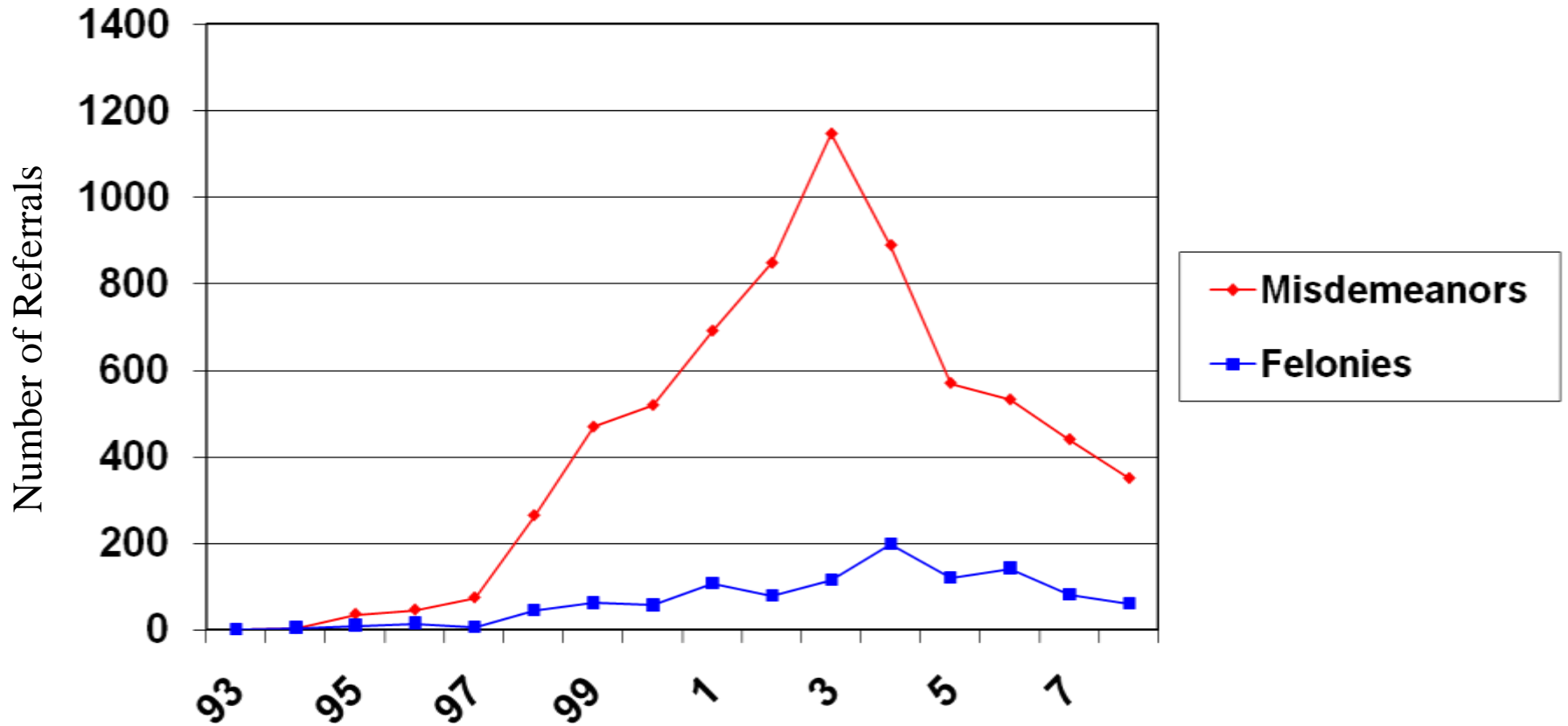


Figure 3. Line graph showing the increase in referrals after police placed on campus and the decrease after the protocol became effective in 2004.

DETENTION RATES ON SCHOOL REFERRALS



OBJECTIVES OF PROTOCOL

- Reduce misdemeanor school referrals to the juvenile court & keep kids in school;
- Reduce probation caseloads that will increase supervision of high risk youth (the kids we are scared of);
- Give police more time to build rapport with students to gather intelligence on crimes about to occur;
- Increase safety in the school and the community;
- Increase graduation rates.

SCHOOL OFFENSE PROTOCOL AGREEMENT

- Focused Acts: Affray, DPS, DC, Obstruction
- First Offense/Warning
- Second Offense/Referral to Workshop
- Third Offense/Complaint Filed



School Offense Agreement Signed by all Police Chiefs, School Superintendent, Juvenile Judges, DFCS Director, and other partners on July 8, 2004

COUNTY OF CLAYTON
UNIFORM NOTICE OF OFFENSE
SCHOOL RESOURCE OFFICER

Upon _____
Month _____ (Day) _____ (Year) _____ at _____ a.m.
_____ p.m.

Name _____ DOB _____ Male
_____ Female

Grade _____ Location _____ School _____

Parent/Guardian _____ Address _____

Home Phone _____
Other Phone _____

Offense _____
In violation of Code Section _____
Remarks _____

WARNING: _____ **LEVEL**

You are hereby warned for the above-cited offense in violation of the laws of the State of Georgia and the code of conduct of the Clayton County Public School System. You are further warned that conduct involving certain focused acts that include fighting, disorderly conduct, obstruction of a police officer (failure to obey the lawful commands of a police officer), and disrupting the school may result in other action that may include attendance by the student and parent in a school conflict education class, mediation, or other program (failure to attend will result in the filing of delinquent charges against the student in the juvenile court) or filing of a complaint in juvenile court if the student has already attended such a program or if the conduct involves a felony or a non-focused misdemeanor act. A copy of this Warning will be sent to your parent, guardian or custodian and kept on file in the school office. You must conduct yourself in a manner required by the code of conduct provided to you and your parent, guardian or custodian and by the laws of the State of Georgia or you will be subject to further action.

REFERRAL: _____ **LEVEL**

You have been cited for the above offense and you and a parent, guardian or custodian will be referred to a program indicated below and sponsored by the Juvenile Court of Clayton County. You are being referred because you have previously been cited for a similar delinquent act and warned or the officer considers your conduct after investigation to constitute an act of "bullying" and immediate action to address your conduct is required. This referral will be sent to your parent, guardian or custodian, the Juvenile Court of Clayton County, and kept on file in the school office. This referral does not constitute a formal complaint to the juvenile court, but will be used by the court to arrange for your attendance at the program as indicated below. Failure to respond to the court or attend the program as instructed will result in formal action brought against the student by the filing of the above-cited offense in the juvenile court.

You and your parent, guardian or custodian are referred to:

School Conflict Education Workshop
 Mediation
 Other _____

SCHOOL USE ONLY
Parent notified by:
 Phone In person Mail
Date of Notice _____

STUDENT ACKNOWLEDGEMENT AND RECEIPT: The undersigned hereby acknowledges service of this Warning/Referral and receipt of copy of same.
SIGNATURE _____

SRO CERTIFICATION: The undersigned has just and reasonable grounds to believe, and does believe, that the student named herein has committed the offense set forth
SIGNATURE _____ Badge # _____

Original-SRO _____ yellow-school _____ pink-student _____ Juvenile Court Fax-770-472-8192

SRO's after periodic reviews requested a "Level" box to reflect the use of their discretion to issue another warning or referral in lieu of the next step.

SRO's also requested the discretion to make a variety of referral, or take other action

CHAPTER FOUR: School Safety

Engaging Students to Promote Safety
in the Schools

**“Schools are a microcosm of the
community”**

Sgt. Marc Richards

Supervisor, SRO Unit

Clayton County Police Department

ALLEGORY OF THE SCHOOL

BY OFFICER ROBERT GARDNER
Clayton County Police

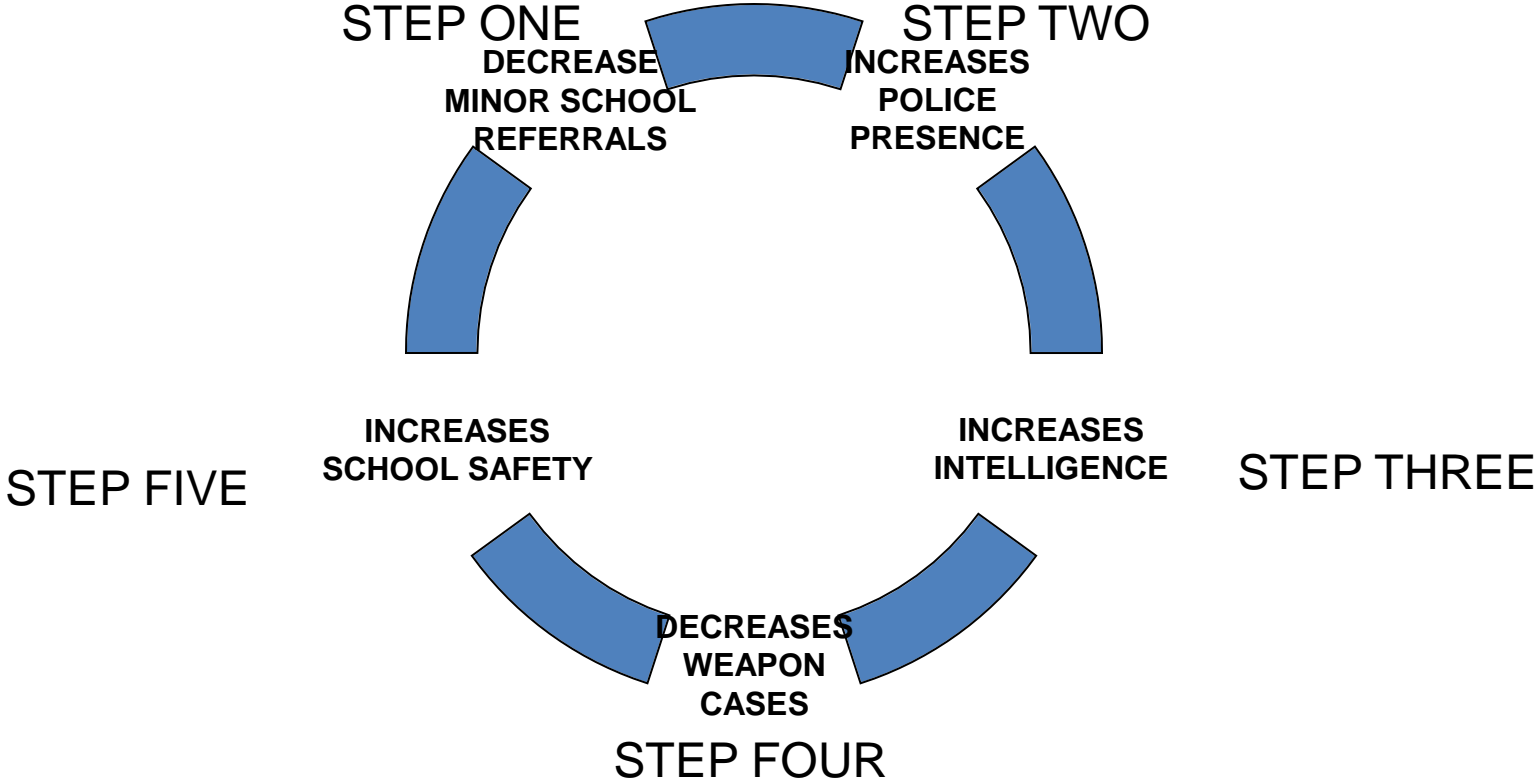
LAMBS

SHEEP

WOLVES

THE SCHOOL

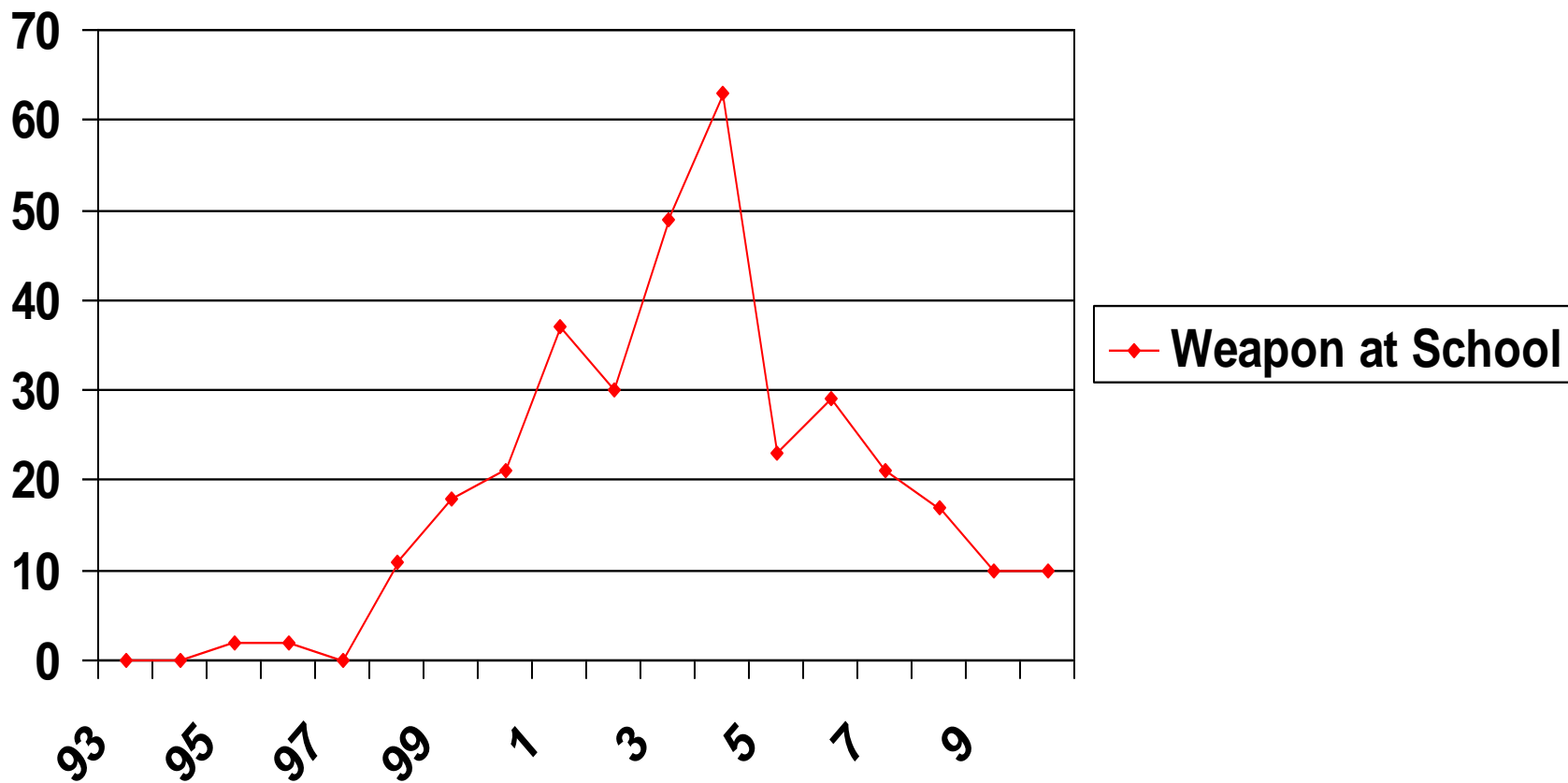
PROTOCOL EFFECT ON SCHOOL SAFETY



EFFECTIVE USE OF PROTOCOL PROMOTES SAFETY



PROTOCOL INCREASES POLICE INTELLIGENCE



AVOIDING A TRAGEDY & MEDIA DILEMNA

How will the media & community respond if a person comes on school campus with a gun while your SRO is at intake booking a student for a school fight or disorderly conduct?

CHAPTER FIVE:

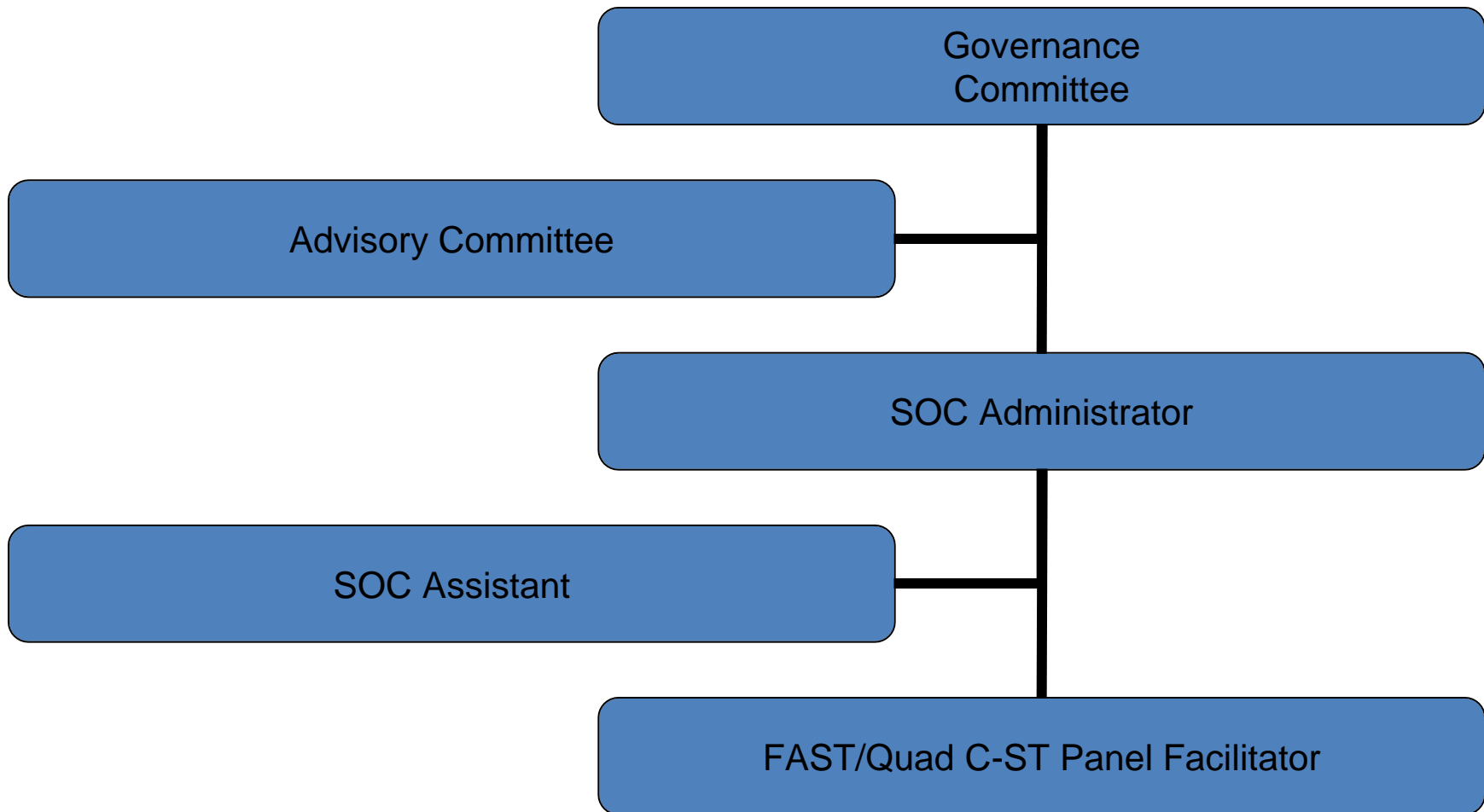
Increase Graduation Rates

Who would ever think that keeping
kids in school will increase
graduation rates?

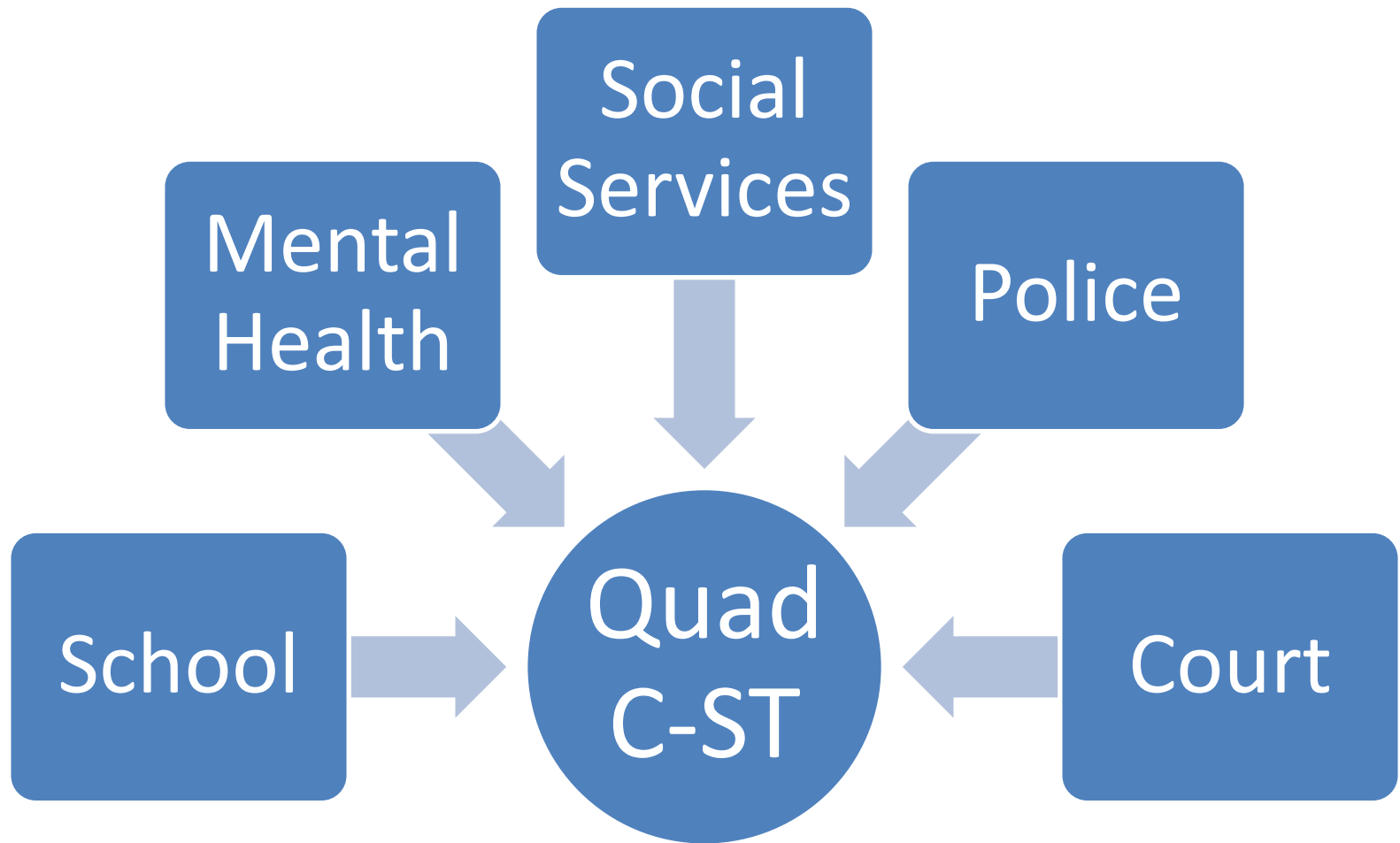
THE RESEARCH



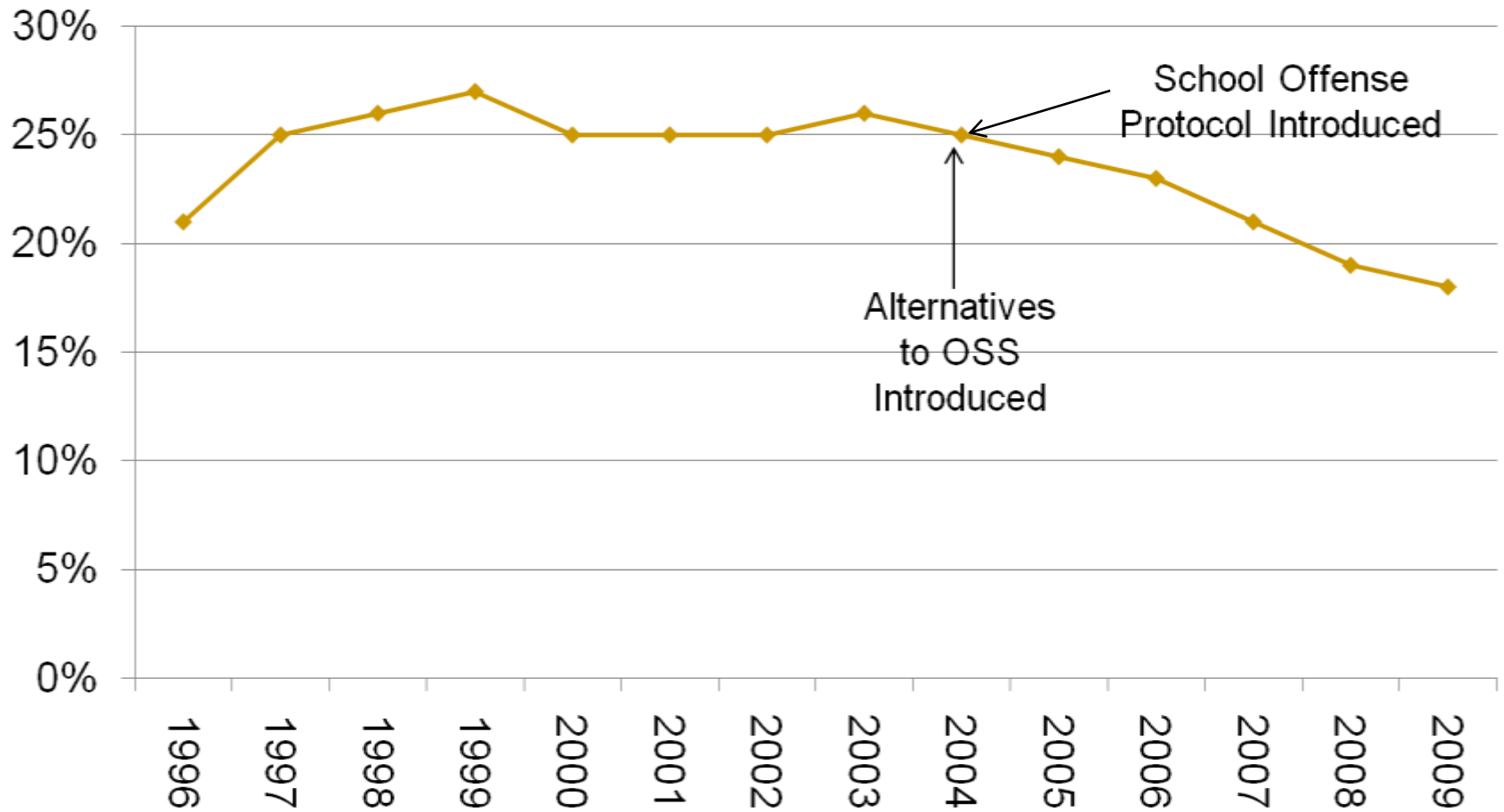
Multi-System Integrated Services Governance Structure



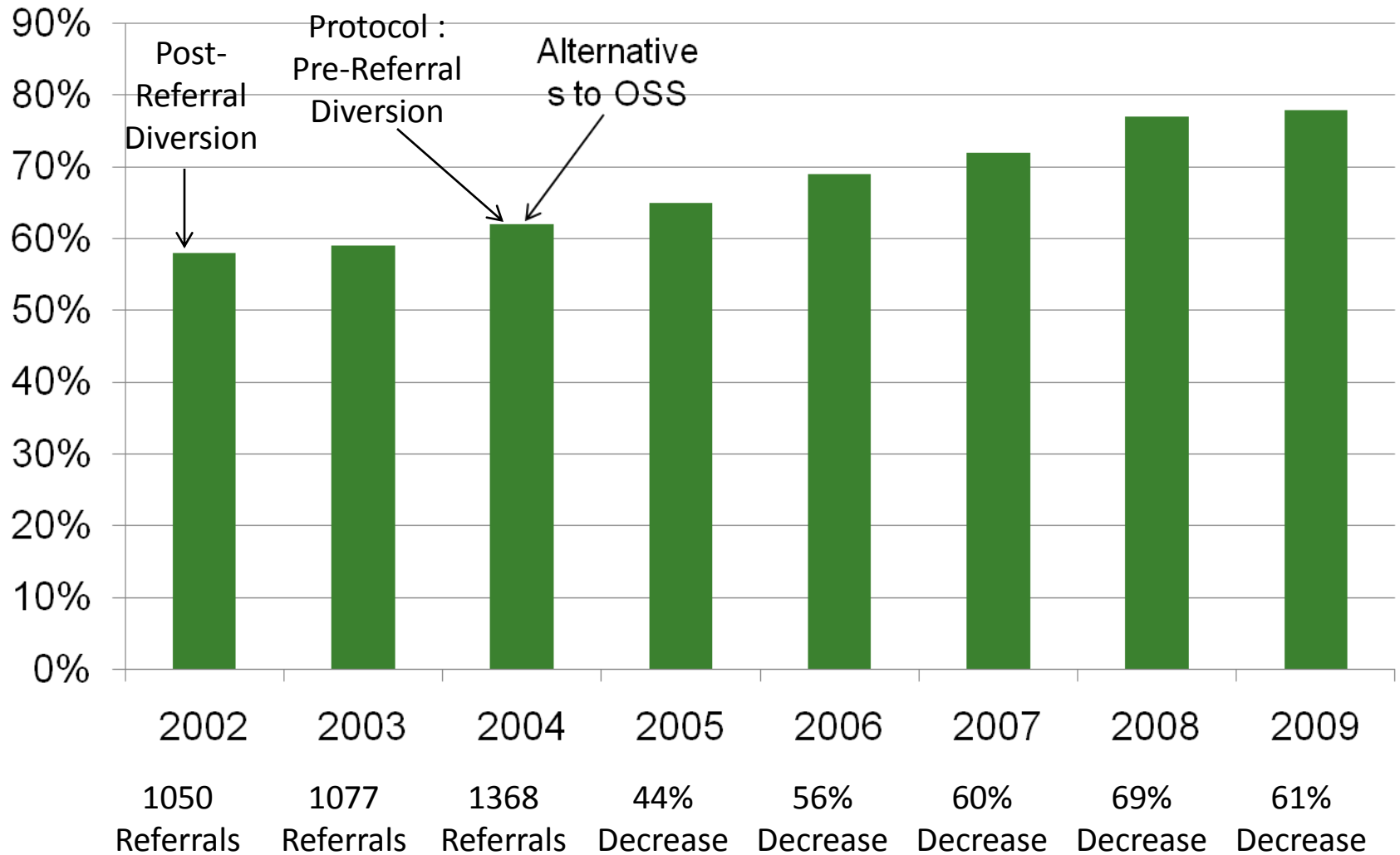
Single Point of Entry



OUT-OF-SCHOOL SUSPENSION MIDDLE SCHOOL

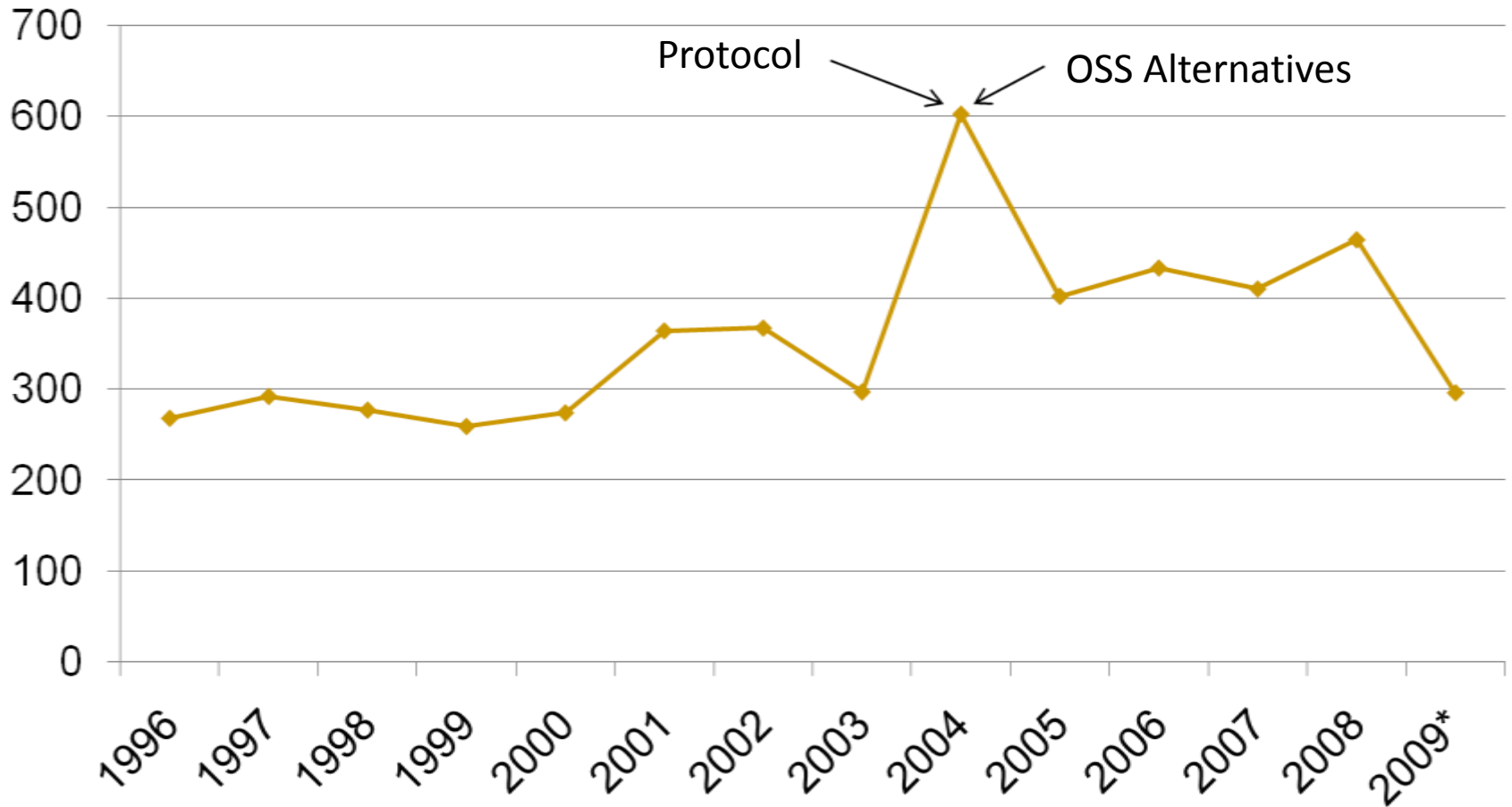


GRADUATION RATES

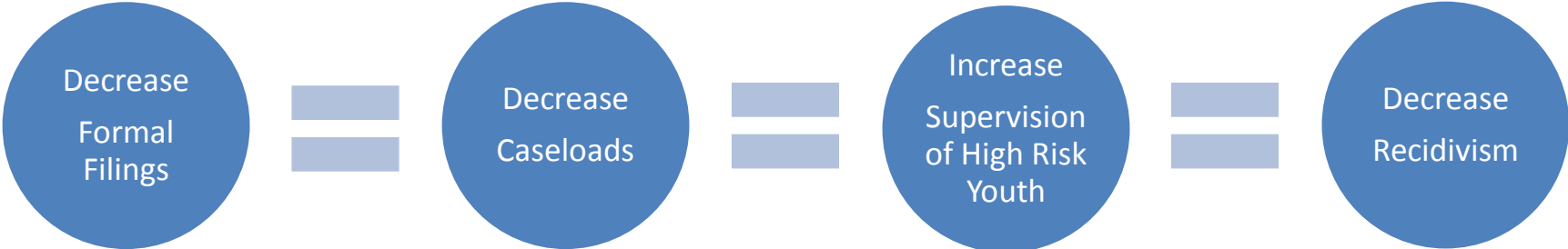


FELONY RATES

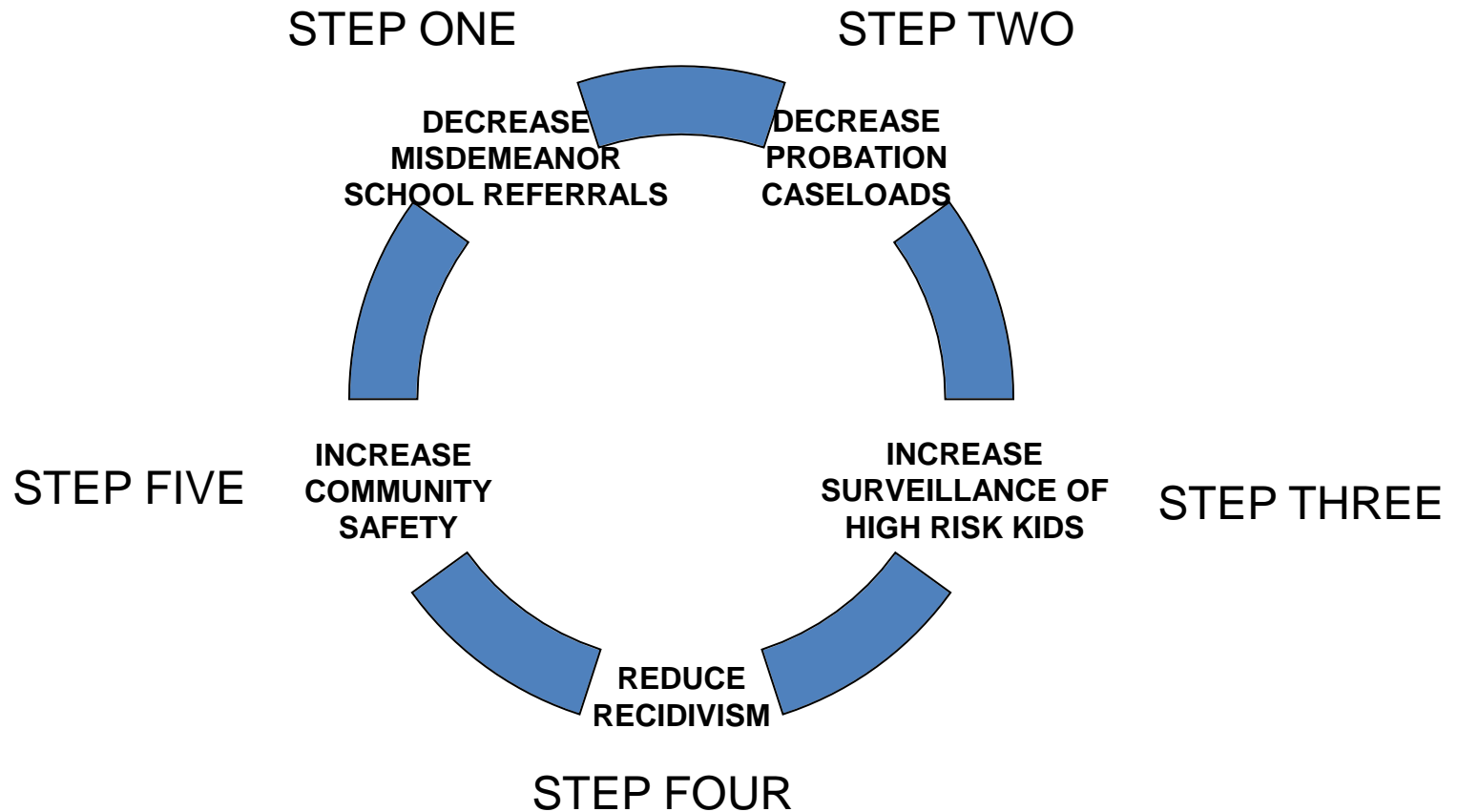
So goes graduation; so goes juvenile crime



TARGET HIGH RISK YOUTH

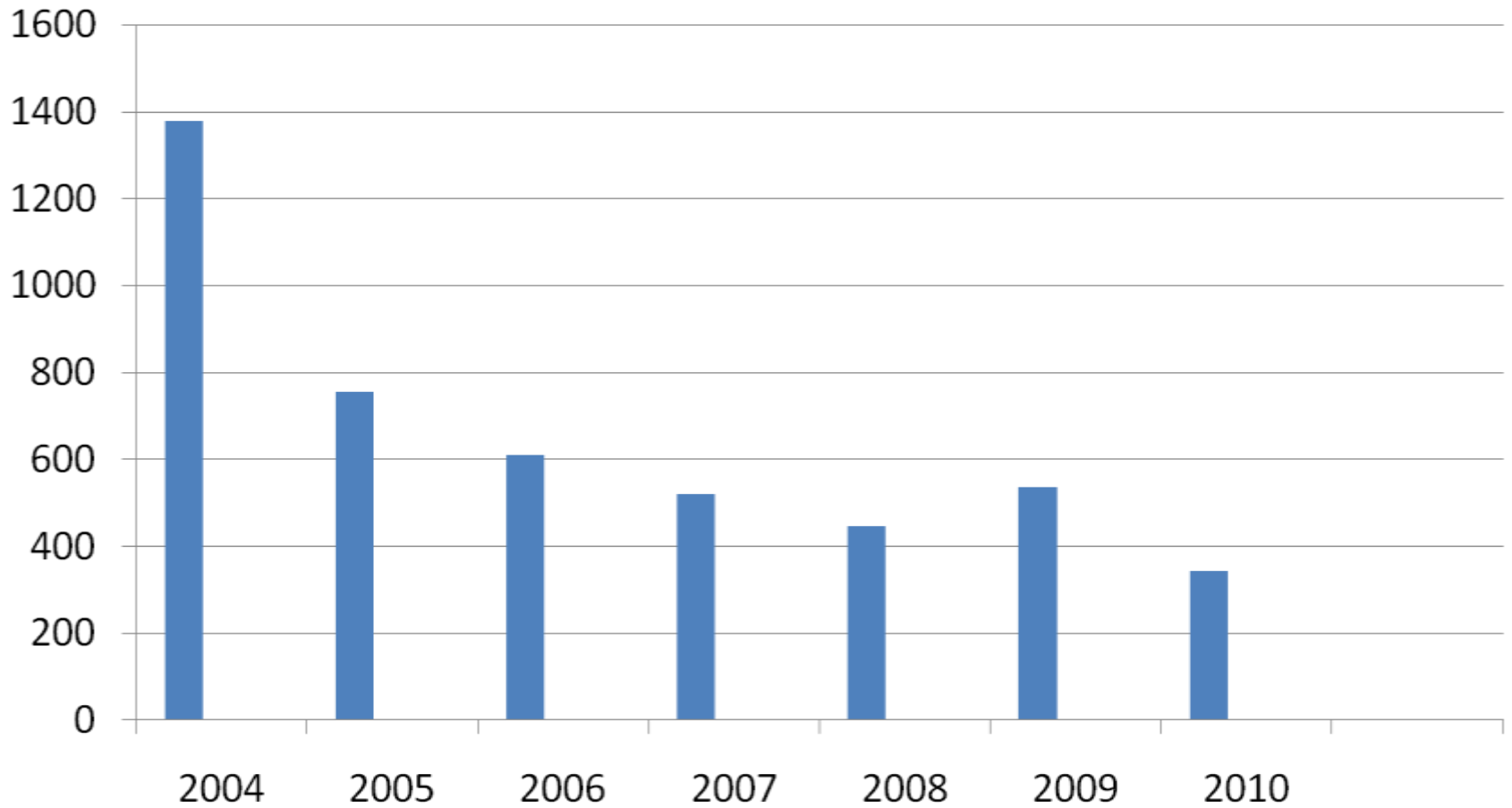


PROTOCOL EFFECT ON COMMUNITY SAFETY



CHAPTER SIX: Reducing Racial & Ethnic Disparities

REFERRAL BY YOUTH OF COLOR



QUESTIONS

Steve.teske@co.clayton.ga.us